



Coulsdon & Woodcote Extended Services Team

is a cluster of local schools and children's centres aiming to share community resources and enable opportunities for all.

- Byron Primary School & Children's Centre
- Coulsdon Church of England Primary School
- Keston Primary School and Nursery
- Oasis Academy Coulsdon
- Chipstead Valley Primary School, Children's Centre and Chipstead Nursery
- Smitham Primary School and Nursery
- St. Aidan's Catholic Primary School
- Woodcote Primary School
- Woodcote High School and Sports College



Cluster Manager

Sharon Marett-Gregory

Keston Primary School

Keston Avenue

Coulsdon

CR5 1HP

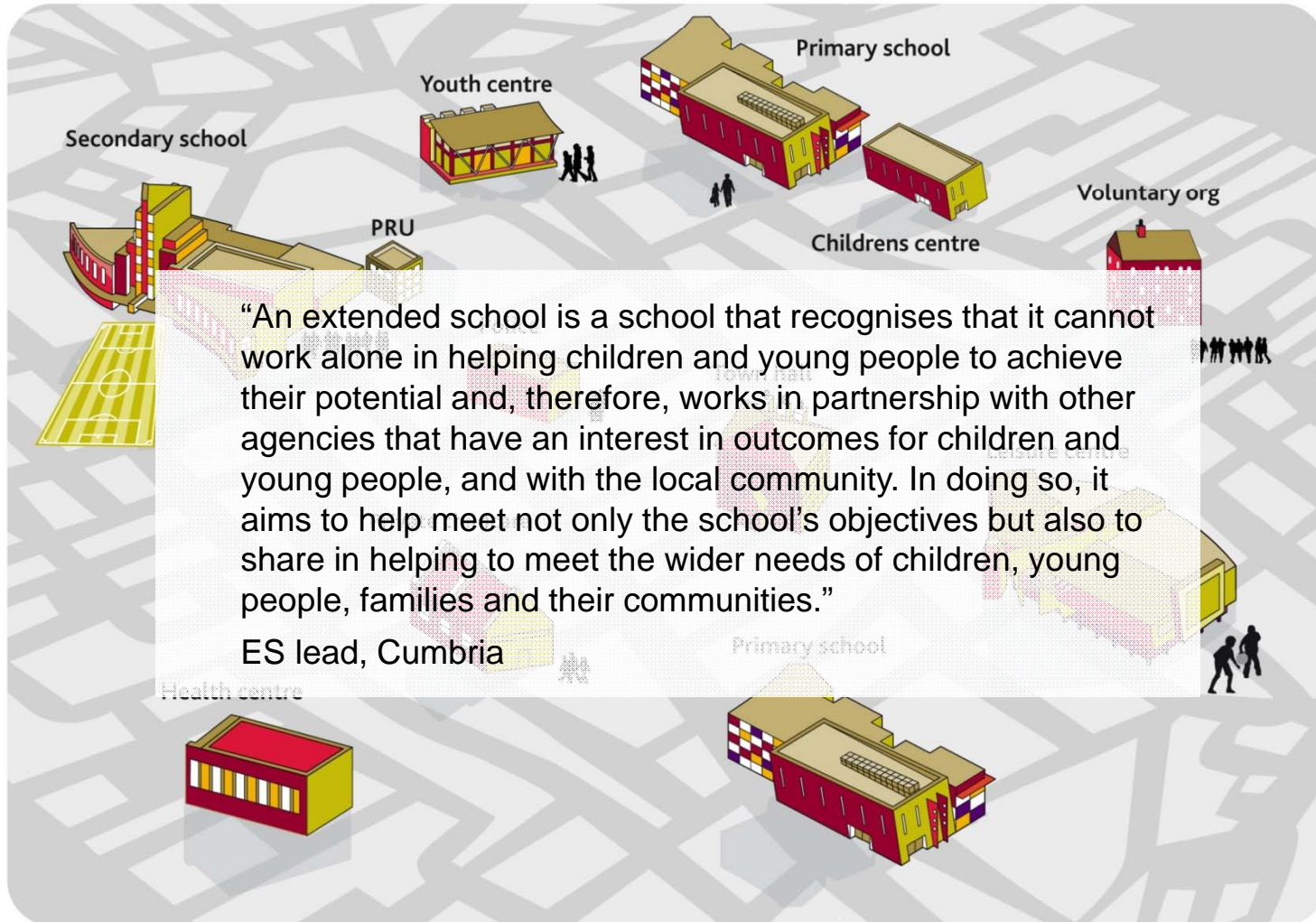
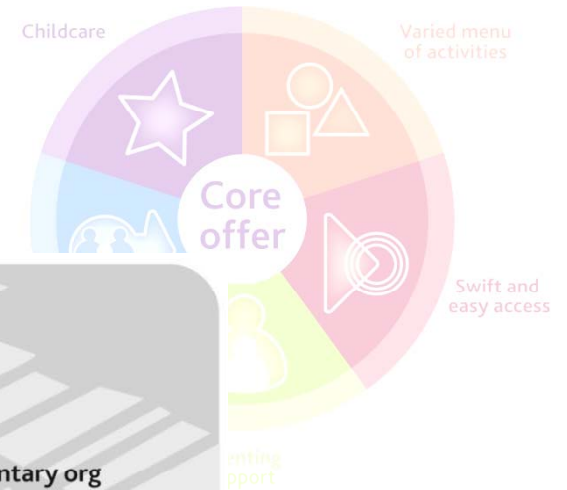
07915.242914

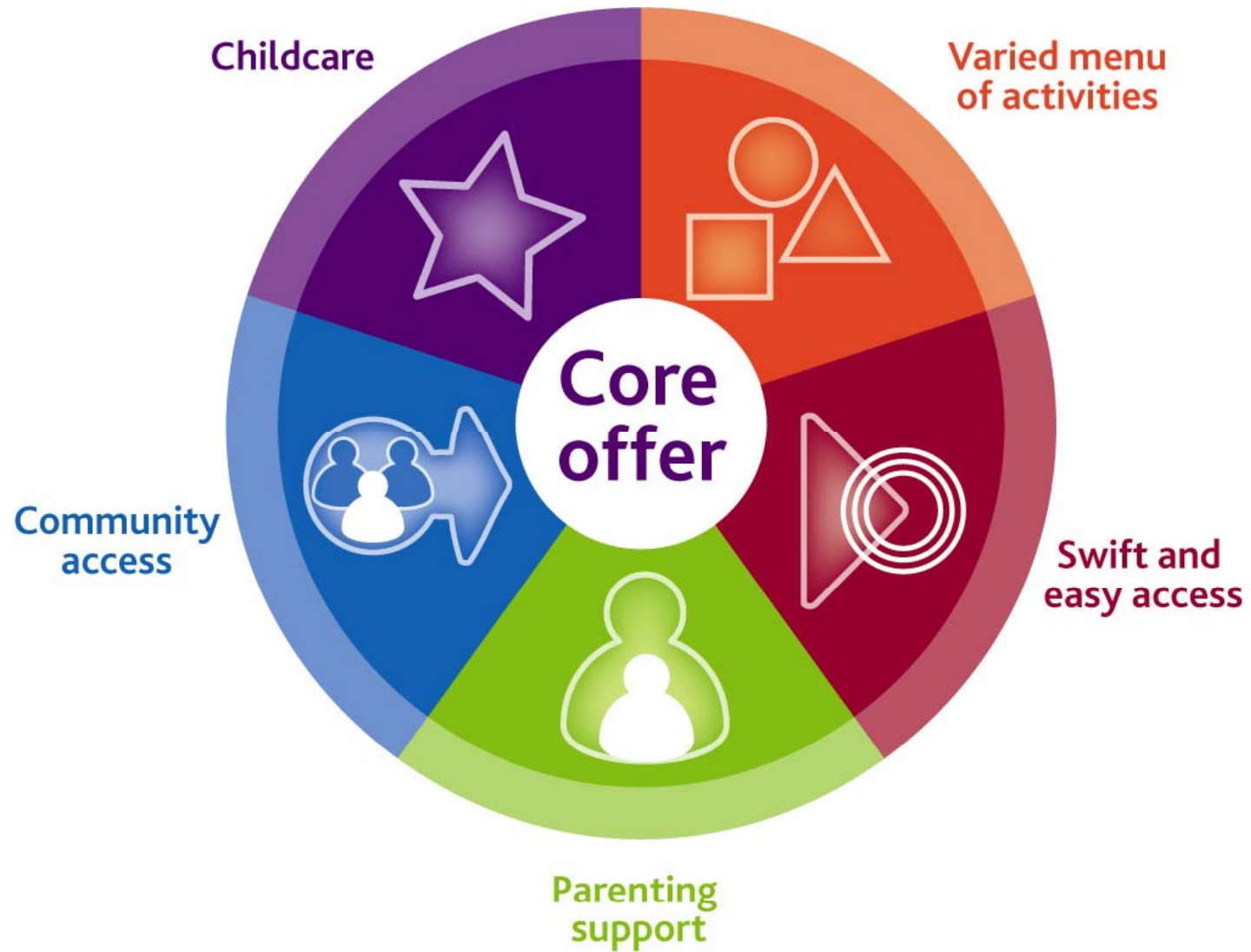
Sha.cwest@googlemail.com

<http://cwestinfo.org/>



What is an Extended School?







<http://cwestinfo.org/>

The Coulston & Woodcote Extended Schools Team website is currently under construction. Watch out for announcements via your extended schools notice boards and school newsletters. We look forward to bringing you news and information for the whole of our extended school community.



- Breakfast Clubs and After School Clubs
- An after school "Safe Place to Be" for our High School children
- Youth Service information.
- Childcare Information Points in all of our primary schools

Parenting Support

Help with supporting your children through transition periods such as transfer to high school, nursery to primary and starting nursery. Information on parenting support groups, workshops and training accessible within your area. Family Learning through CALAT and others.

A Varied Menu of Activity

- Information about after school clubs and holiday activities
- We are developing new provision from private providers to enhance the opportunities currently available in the schools.
- We are looking at commissioning new projects for our area to offer more positive activities for young people.
- The aim is for families to have a good variety of accessible provision as close as possible to their own school.
- We are currently developing our current provision of holiday activities .
- Increase access to study support for our local children.

Swift & Easy Referral to Specialist Support

- We are looking at developing training for Parenting Support Advisers to be accessible within each school.
- Working from our two Children's Centres at Byron and Chipstead Valley we are developing a range of health services such as clinics for midwives and babies, speech and language therapy, free drop ins, young parents groups, parenting support and family learning and much much more. Although the Children's Centres do focus on support for 0 - 5 yrs. older siblings needs are considered.
- We also work within a multi agency environment in order to support families that need it.

Community Access and Cohesion

- Information about how our schools are working towards becoming hubs for families within our community
- Links to our local business partnership and general community news and upcoming events
- Schools are working together to provide a community approach to projects so that all children have access.
- Our multi agency partnership work now provides positive and supportive links with other public services like health, family learning, libraries, youth service, Fire Service and Police.



A key driver for extended schools is the government's determination to close the 'attainment gap' between the levels of achievement of children growing up in disadvantaged circumstances and those of their better-off peers

Extended services are intended to help pupils achieve by enriching the curriculum and removing or addressing the barriers to learning, eg family circumstances, emotional or social issues, lack of motivation/engagement with school, etc

The rationale is that what goes on beyond the classroom has a major impact on children and young people and their readiness to learn. The Joseph Rowntree Foundation reports that children only spend 14 per cent of their time in the classroom

According to an Ofsted survey of extended schools: "The majority of the schools visited had compelling case study evidence that extended services had made life-changing differences to pupils that had led to better attendance and attitudes. The opportunities schools provided for parents enhanced their employment prospects because their self confidence and qualifications improved"

The report identified a number of benefits for schools that offered high-quality extended provision: "Breakfast clubs were frequently linked to improved attendance and readiness to learn. Out-of-school activities often resulted in increased enjoyment of learning, positive attitudes to school and healthier lifestyles"

How Well are They Doing? The Impact of Children's Centres and Extended Schools [Ofsted, January 2008]

www.ofsted.gov.uk/publications/070021